

DEL/DRIVE® 50



“THE IDEAL ALTERNATIVE TO MODULAR BELTS”



	DEL/DRIVE® 50	DEL/DRIVE® 50H	DEL/DRIVE® 50EMLT
Reference	DDB50B9	DDB50B9H	DDB50B9EMLT
Material	Polyurethane	Polyester elastomer	Polyurethane
Colour	Blue	Blue	Blue
Top surface	Smooth	Smooth	Embossed
Hardness	95 ShA	55 ShD	92 ShA
Pitch* (mm)	50	50	50
Thickness (mm)	3	3	3
Total thickness (mm)	9	9	9
Maximum width (mm)	1 100	1 100	1 100
Weights	4.8 kg/m ²	4.4 kg/m ²	4.8 kg/m ²
Min. pulley diameter (mm)	95	128	95
Min. pulley diameter - back flex (mm)	100	150	80
Temperature range	-20°C to +60°C	-20°C to +80°C	-30°C to +50°C
Traction force at 2,5% elongation for 100 mm width	65 daN	160 daN	35 daN
Friction coefficient			
On HDPE bed	0.2	0.15	0.25
On stainless steel bed	0.52	0.45	0.6

*Exact value : Contact us

DEL/DRIVE® 50



The DEL/DRIVE® positive drive belt meets the **most stringent standards of hygiene** and is **the ideal alternative to conventional modular belts**. It replaces a modular belt without any modifications. It is either driven on a sprocket or a motorized drum.

The DEL/DRIVE® belt is installed **without tension**, thereby reducing stress on the conveyor's mechanical components: shafts, anti-friction bearings, roller bearing, etc. DEL/DRIVE® can be configured with flights, sidewalls or other profiles (see page 18).

The DEL/DRIVE® comes in several versions to meet all needs:

The DEL/DRIVE® 50 belt in polyurethane is both flexible and has high tensile strength. It is the ideal solution for the conveyance of light to medium-weight loads.

The DEL/DRIVE® 50AM belt has the same characteristics as the DEL/DRIVE® 50 belt plus an infused antimicrobial treatment. DEL/DRIVE® 50AM improves food safety by inhibiting the proliferation of bacteria.

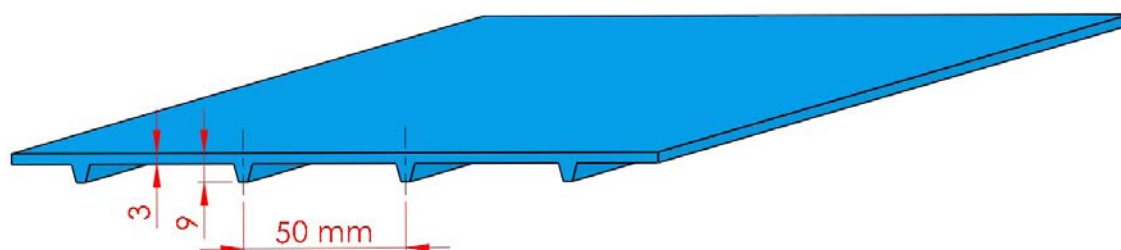
This prevents the contamination of transported products.

A further benefit is the reduction of odours and cleaning cycles.

The DEL/DRIVE® 50AMEM belt has an infused antimicrobial treatment and an embossed top surface that reduces adherence of the products on the belt.

The DEL/DRIVE® 50H belt in polyester elastomer is recommended for medium to heavy loads and can be used with long centre-to-centre distances. In certain cases, its high tensile strength and low friction coefficient permits a build-up of transported products. It can withstand higher peak temperatures, depending on the load.

The DEL/DRIVE® 50EMLT belt is specially designed to operate in very low ambient temperatures. Its embossed top surface facilitates the conveyance of frozen products.



DEL/DRIVE® 50

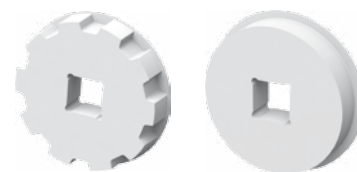


SPROCKETS AND IDLER WHEELS



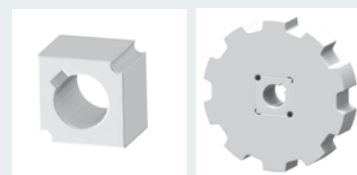
REFERENCE	PRODUCT	MATERIAL	NUMBER OF TEETH	OUTER DIAMETER	SQUARE BORE	WIDTH (mm)
P50WUN06	Sprocket	HDPE	6	95	40	32
R50WUN06	Wheel	HDPE	-	83	40	32
P50WUN08	Sprocket	HDPE	8	128	40	32
R50WUN08	Wheel	HDPE	-	116	40	32
P50WUN10	Sprocket	HDPE	10	161	40	32
R50WUN10	Wheel	HDPE	-	149	40	32
P50WUN12	Sprocket	HDPE	12	193	40	32
R50WUN12	Wheel	HDPE	-	181	40	32

Flanged sprockets and wheels are available on request.

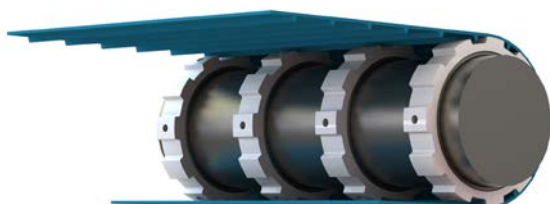


The standard sprockets we offer have a square bore for a 40x40 mm drive shaft.

They can be mounted on other shafts with special adapters.
Please enquire for any other dimensions of round or square shaft.



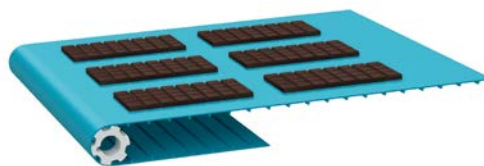
On a smooth driving drum, sprockets can be mounted on bushings or a driving drum with profiled polyurethane lagging.



DEL/DRIVE® 25



"POSITIVE DRIVE ON SMALL PULLEY DIAMETERS"



DEL/DRIVE® 25	
Reference	DDB25B5.3
Material	Polyurethane
Colour	Blue
Top surface	Smooth
Hardness	95 ShA
Pitch (mm)	25.5
Thickness (mm)	1.7
Overall thickness (mm)	5.3
Max. width (mm)	530
Weights	2.8 kg/m ²
Min. pulley diameter (mm)	48
Min. pulley diameter - back flex (mm)	50
Temperature range	-20°C to +60°C
Traction force at 2% elongation	25 daN for a width of 100mm
Friction coefficient	
On HDPE bed	0.2
On stainless steel bed	0.55

The DEL/DRIVE® 25 belt is flexible, light with a small pitch and thickness for smaller diameter sprockets. It thus reduces the space requirements of conveyors and facilitates the transfer of transported products.



DRIVE SPROCKETS



REFERENCE	MATERIAL	NUMBER OF TEETH	OUTER DIAMETER (mm)	BORE (mm)		WIDTH (mm)
				square bore	round bore	
P25WUN06	HDPE	6	48	-	25	25
P25WUN08	HDPE	8	65	-	25	25
P25WUN10	HDPE	10	81	40	-	25
P25WUN12	HDPE	12	97.5	40	-	25