



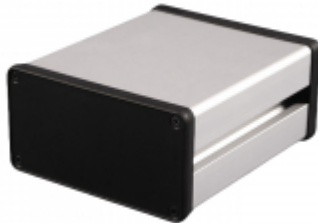
Quality Products. Service Excellence.

# Extruded Aluminum Channel Mount Enclosure 1455NC Series

Anodized Finish, Plastic or Metal End Panels

## Key Features:

- Designed to house P.C. boards or equipment - for easy enclosure mounting to aluminum channel.
- Two versions to choose from (open bezel with metal endplates OR solid ABS plastic bezel ).
- Sized for P.C. boards with 92mm (min.) to 98mm (max.) width. Enclosures will not accept & were not designed for 100mm wide eurocard.
- P.C. boards mount horizontally by sliding into internal slots extruded into the enclosure body.
- Rugged one piece body - constructed from extruded aluminum with a minimum thickness of .09" (2.29 mm).
- Extruded body & aluminum endplates (on metal endplate version) are clear anodized.
- Open bezel - metal endplate version includes eight (8) clear zinc plated assembly screws  
NOTE: Recommended screw torque is 5 lbf/in
- Solid bezel version includes eight (8) black assembly screws. NOTE: Recommended screw torque is 5 lbf/in.



## 1455NC Accessories



T-Nut  
1455TNUT



T-Nut W/ Spring  
1455TSNUT



Flange Brackets  
1455NCFL



T-Bolt Kit  
1455TBOLT

## Enclosures

Enclosure with Metal End Panels	Enclosure With Plastic End Panels	Length	Width	Height
1455NC1201	1455NC1202	4.72	4.06	2.09
1455NC1601	1455NC1602	6.30	4.06	2.09
1455NC2201	1455NC2202	8.66	4.06	2.09

